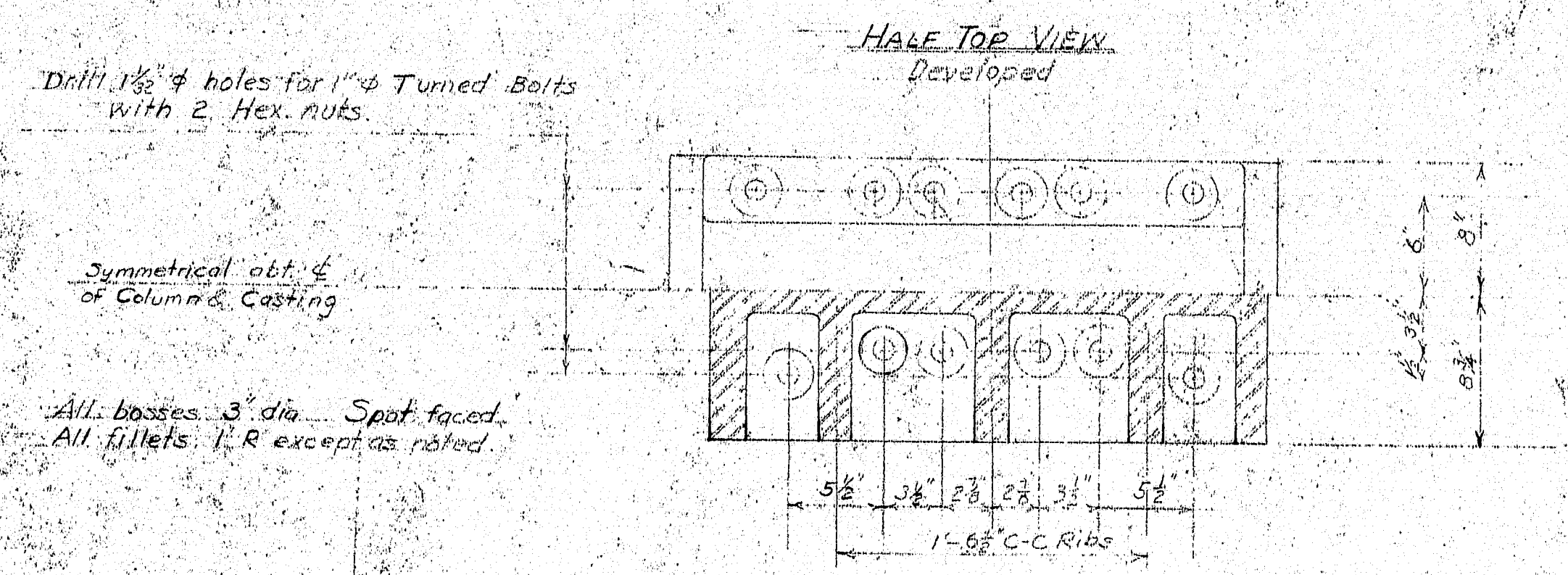
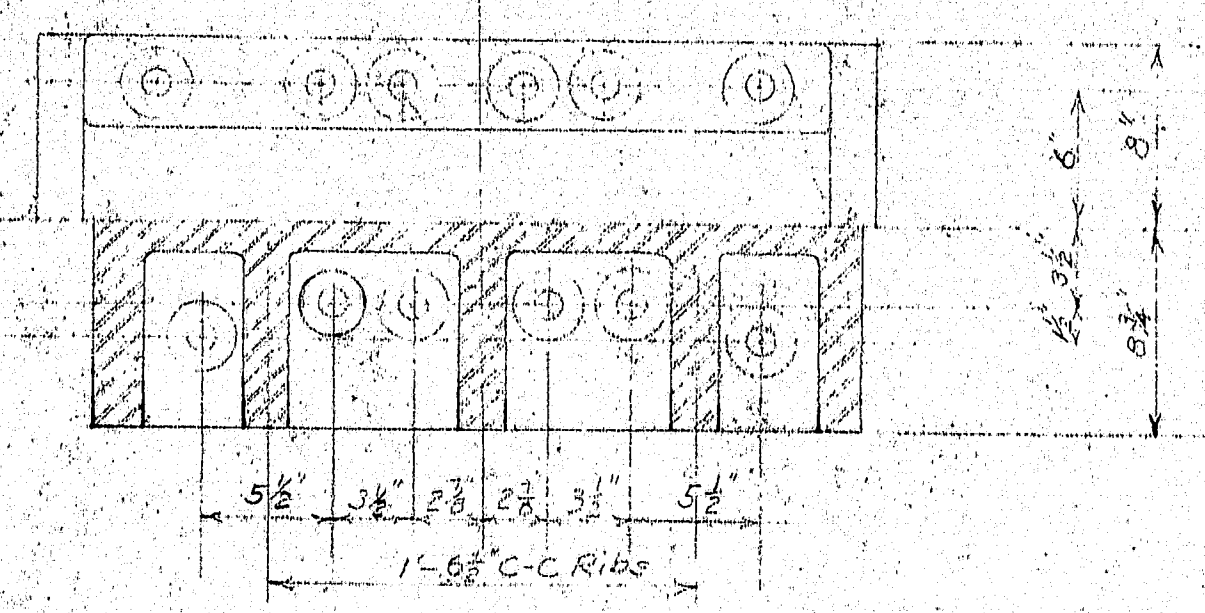


SECTION B-B
Scale 3\"/>

ELEVATION OF CABLE BENT SADDLE
As Required Cast Steel annealed
Scale 1\"/>



HALF TOP VIEW
Developed



All bosses 3\"/>

ESTIMATED WEIGHT OF ONE CABLE BENT SADDLE	2000#	1660
TOTAL FOR BRIDGE	8000#	6640

REVISION	DATE	REMARK
1-7-38		Reduction of thickness and correction of R
7-26-37		Revised as built

SUPERSTRUCTURE
P.W.A. PROJECT NO. ME 1010D
DEER ISLE SEDGWICK BRIDGE DISTRICT
BRIDGE OVER EGGEMOGGIN REACH
FROM LITTLE DEER ISLE TO SEDGWICK
HANCOCK COUNTY, MAINE

CABLE BENT SADDLES
ROBINSON AND STEINMAN
ENGINEERS
NEW YORK CITY
SCALE AS NOTED
DRAWING NUMBER
RS 3310-8
SEPTEMBER 1937

